



# THE MERCED DIVISION OF THE ACADEMIC SENATE



346A Kolligian Library

<http://senate.ucmerced.edu>

[senateoffice@ucmerced.edu](mailto:senateoffice@ucmerced.edu)

# UC's Tripartite Mission

- Teaching
- Research and Scholarly Endeavors
- Service



# What is the Academic Senate?



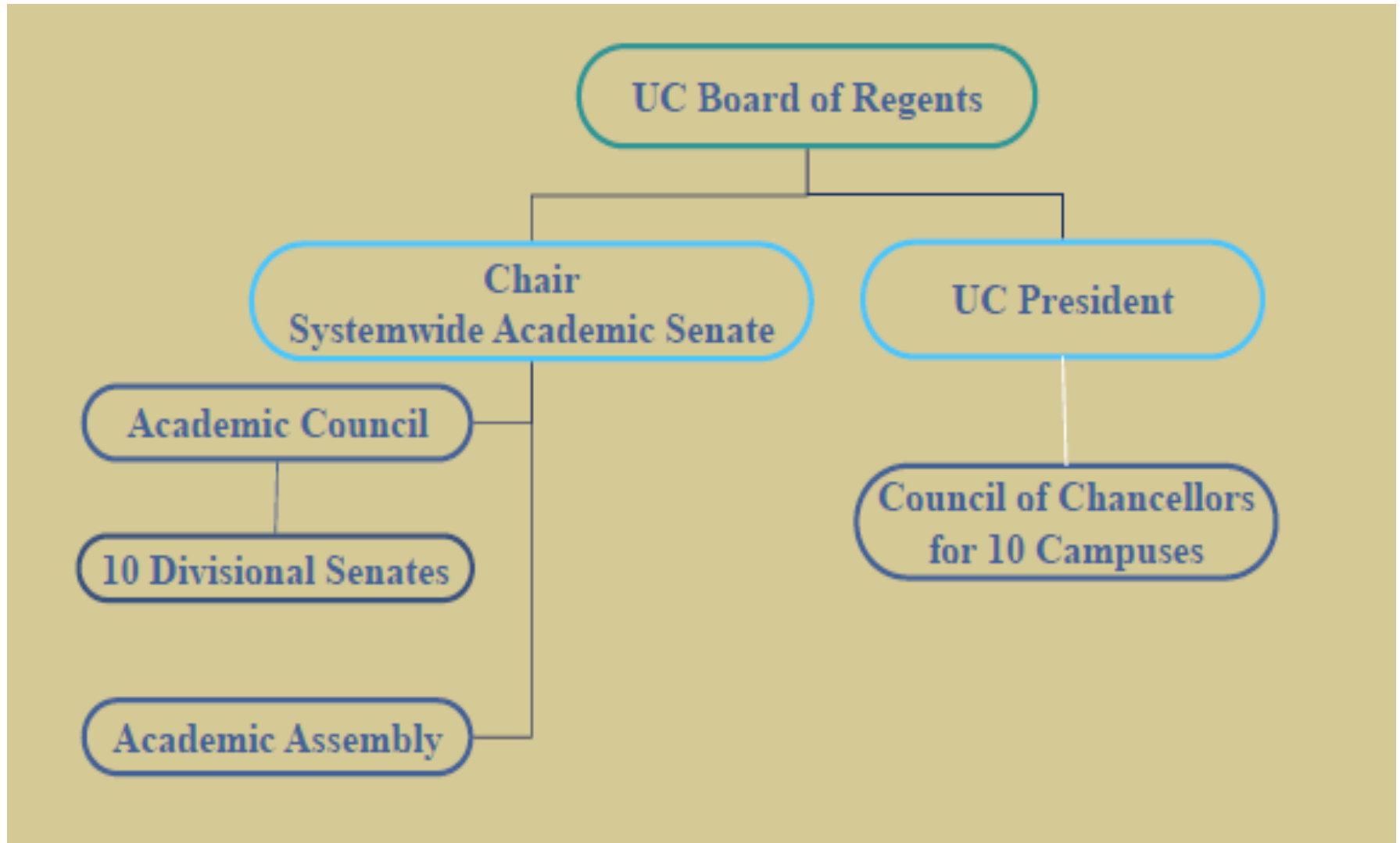
- The Academic Senate of the University of California is acknowledged to be a highly developed and influential faculty government.
- It is the vehicle through which University of California faculty share in the operation and management of the University.
- The Senate is empowered by UC's governing body, [the Board of Regents](#), to exercise direct control over academic matters of central importance to the University.

# Shared University Governance



- ❑ The UC Merced Academic Senate operates as a legislative body and as a system of committees run by and for the faculty.
- ❑ Through involvement with the Senate, faculty become part of the larger community and have the opportunity to learn, serve, and lead.
- ❑ Shared governance brings with it the responsibility of contributing to the community.
- ❑ Faculty must participate in the discussions, analyses, and decisions that will determine the University's future.

# Systemwide Academic Senate



# Senate Councils and Committees

- Teaching/Education
  - ▣ Undergraduate Council (UGC)
  - ▣ Graduate Council (GC)
- Research/Scholarship
  - ▣ Committee on Academic Personnel (CAP)
  - ▣ Committee on Research (COR)
- Budget Planning & Resources
  - ▣ Committee on Academic Planning and Resource Allocation (CAPRA)
- Service/Outreach
  - ▣ Committee on Committees (CoC)
- Faculty Interests and Rights
  - ▣ Committee on Faculty Welfare, Diversity, and Academic Freedom (FWDAF)
  - ▣ Committee on Privilege and Tenure (P & T)
  - ▣ Committee on Rules and Elections (CRE)

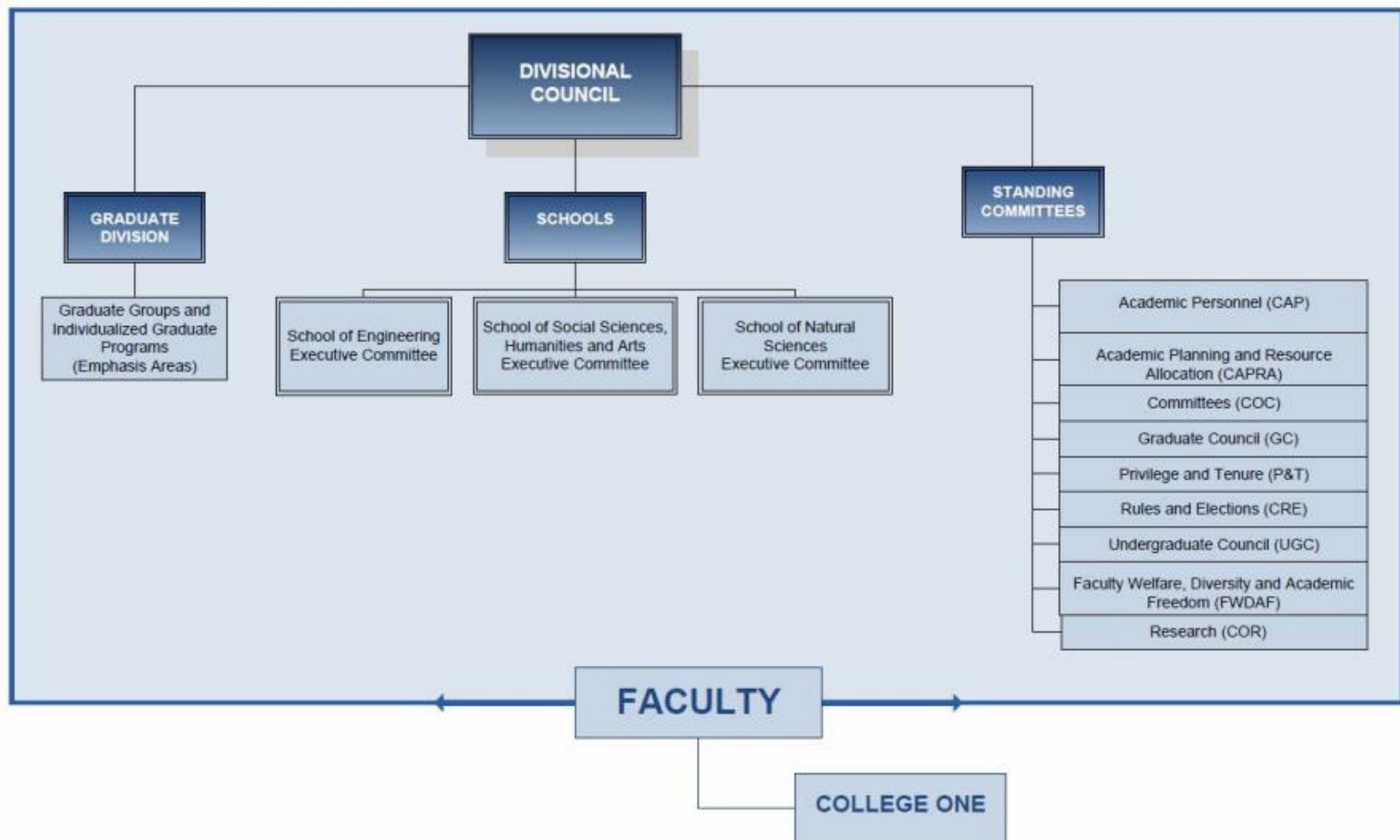
<http://www.senate.ucmerced.edu/committees>

# Who are Senate Members?

- The President;
- The Chancellor, Vice Chancellors, Provosts, Deans, Directors of Academic Programs, Chief Admissions Officer, Registrar, and University Librarian at Merced;
- Lecturers with Security of Employment, Lecturers with Potential for Security of Employment;
- Academic Senate members holding statewide appointments only, and not enrolled in another Division, who choose to enroll in this Division by informing the Secretary of the Division.
- Membership does not lapse because of leave of absence or transfer to emeritus status. The Committee on Rules and Elections determines whether a person meets the requirements for membership.

# UCM Academic Senate

## Academic Senate

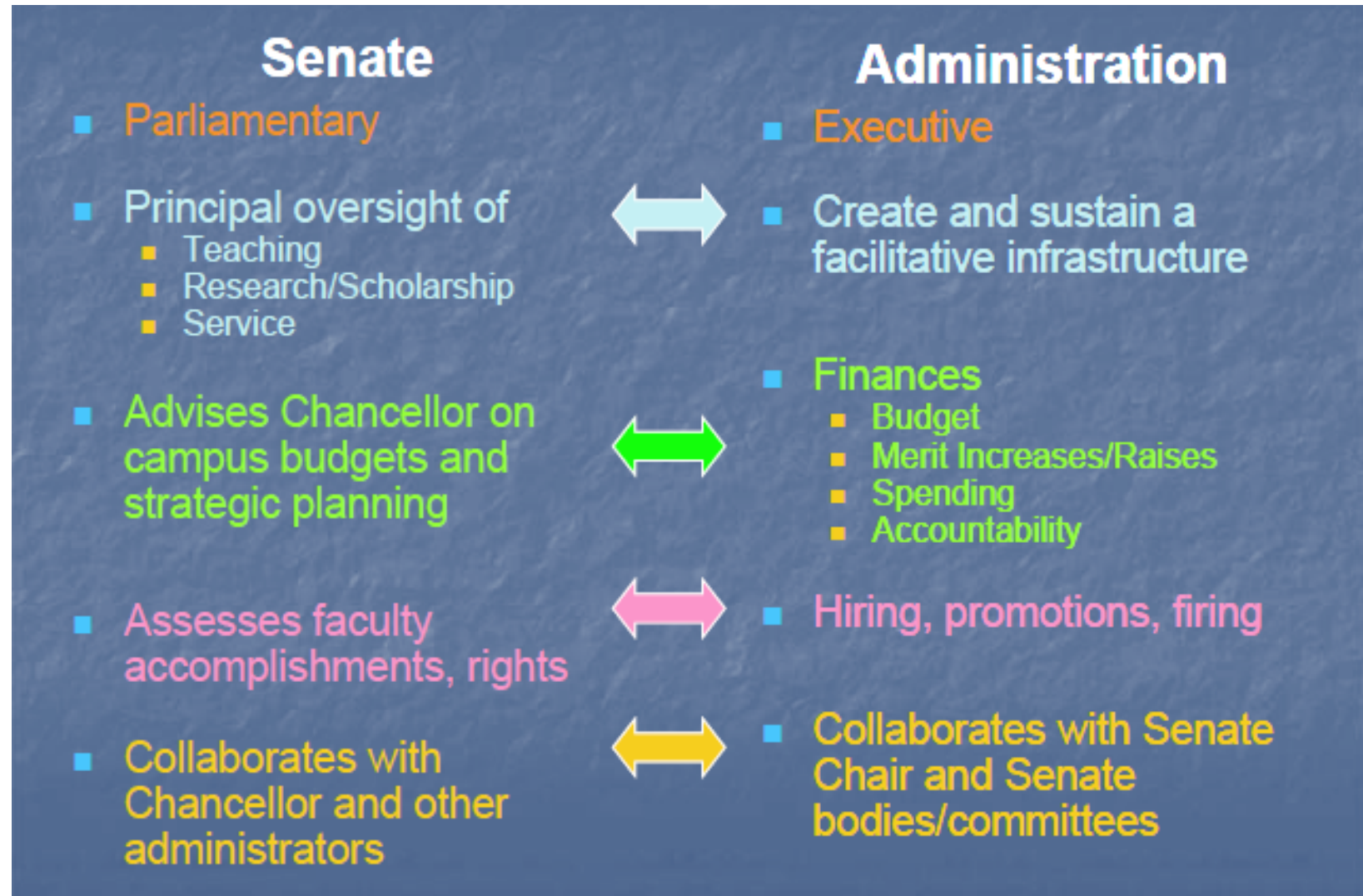


# What are the Faculty Responsible For?



- Setting admissions criteria
- Authorizing, approving and supervising all courses, curricula, and academic programs
- Determining degree requirements
- Advising the administration on faculty appointments and promotions
- Advising the administration on budget and financial planning

# Relationship between Faculty Senate and Administration



# 2014-2015 Senate Leadership

Jian-Qiao Sun, Chair

Cristián Ricci, Vice Chair

Raymond Gibbs, CAP Chair (UCSC)

Anne Kelley, CAPRA Chair

Patricia LiWang, CoC Chair

Peter Vanderschraaf, CRE Chair\*

David Noelle, COR Chair

Kathleen Hull, GC Chair

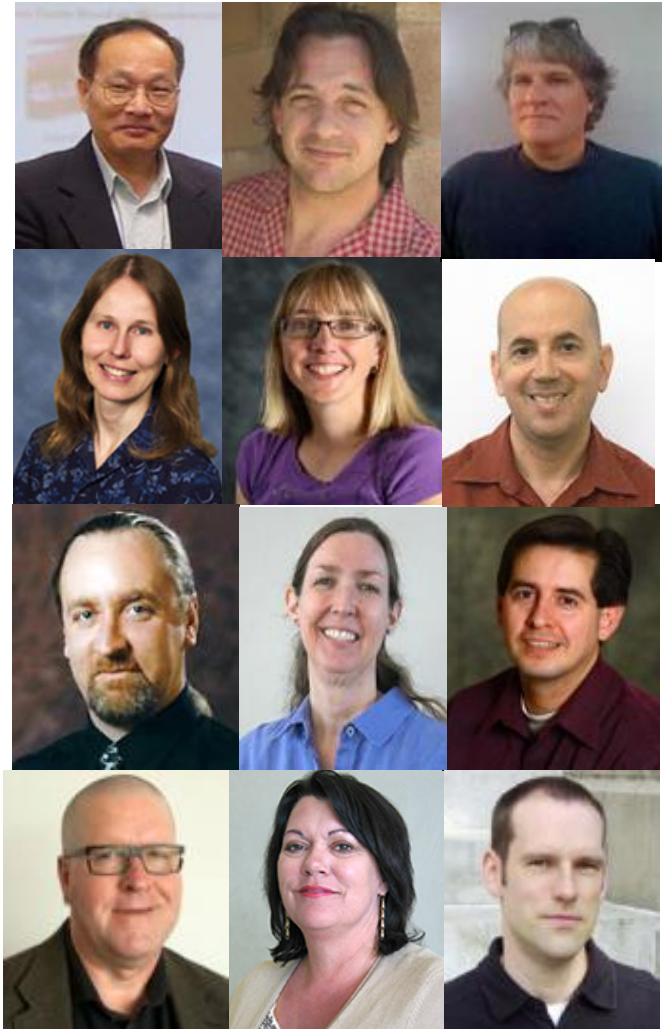
Rudy Ortiz, FWDAF Chair

Jack Vevea, UGC Chair

Robin DeLugan, At-Large Member

Thomas Hansford, At-Large Member

*\*Non-voting member*



# Senate Office

Simrin Takhar  
Senior Analyst

Mayra Chavez  
Senate Analyst

Fatima Paul  
Assistant Director

Dejeuné Shelton  
Executive Director

